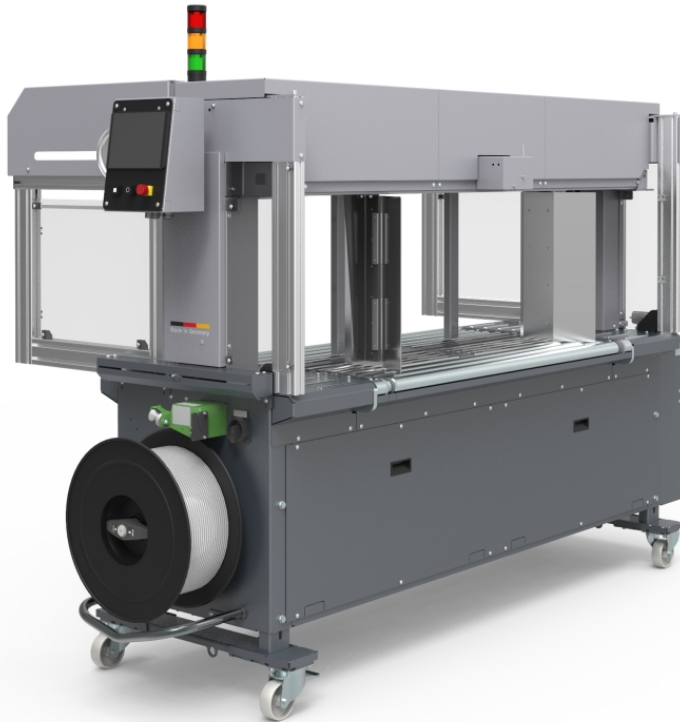


The strapping machine for folded boxes and wide products

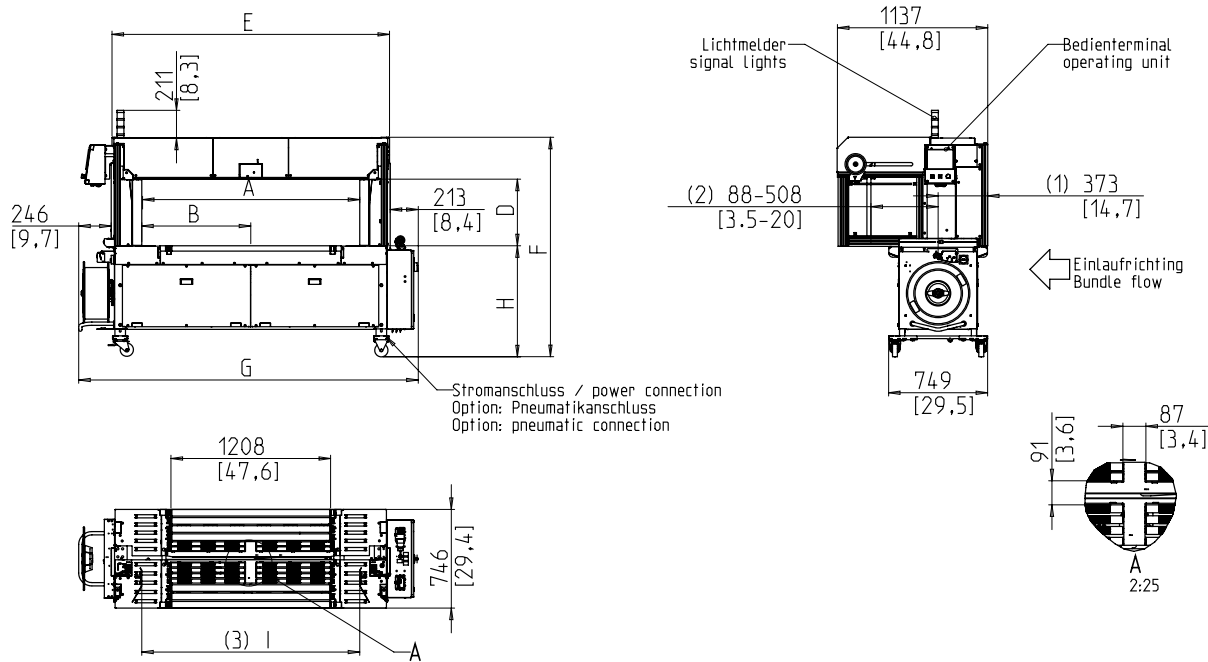


- Robust and extremely low maintenance
- Pneumatic free
- Highest rate of availability
- 5 - 12 mm strap
- Optimal strap guide at the strapping level

### EQUIPMENT:

- 5000 bundle recipes
- ASLF 'Anti-Strap-Loss-Function' Constant strap control
- Automatic Strap feed
- Strap width 5 - 12 mm, either
- DAT 'Direct-Access-Technology'
- The exclusive eject function avoids strap jam
- Torque controlled strap tension, adjustable
- Upstream and downstream interlocks
- EPP 'Exact Product Path'
- Conveyor speed steplessly adjustable
- GreenTech energy concept, low power consumption
- MFT 'Mono-Frame-Technology'
- OPTIONAL: Bundle compensator, side mounted
- Bundle stops, optional
- Bundle press, optional
- SAO 'Safe and Open' - Safe without protection doors
- SMART TOUCH – Icon control concept
- Table height steplessly adjustable
- Bundle flow control
- Wear-free, energy saving direct-drive-motors
- Low maintenance and low wear strap arch
- Many specific options available, easily configurable

# SMB VERO-C



- (1) Umreifungsebene / strapping level  
 (2) Abstand: Paketanschlaege / Umreifungsebene  
 (3) Abstand Fuehrungsbleche
- Maße in mm/inch  
 dimensions in mm/inch  
 Gewicht in kg/lb  
 Weight in kg/lb

Zeichnung enthaelt Optionen der SIG-VCS Ausstattungsvarianten

Arch Size WxH	1250x600	1650x600
Sealing head centered	X	X
Order number	x49715	x49716
Total length + Coil	G 2170	2570
Total height	F 1555-1785	1555-1785
Position sealing head	B 700	900
Inner width (arch)	A 1400	1800
Arch width	E 1709	2109
Inner height (with press)	D 505	505
Inner height (arch)	C 640	640
Table height	H 791-1021	791-1021
Weight in kg	380	420

## TECHNICAL SPECIFICATION:

### CAPACITY:

Single strap, bundles/minute up to: max. 32  
 At table belt speed in m/s: 0,8  
 Based on bundle size l x w in mm: 300 x 210  
 Depending on arch size and tension force

### BUNDLES:

Width in mm  
 Min.: 100  
 Max. bundle width depending on arch size  
 Length in mm: min. 150  
 Height in mm  
 Min.: 30  
 Max. bundle height depending on arch size  
 Weight in kg: max. 50

### TRANSPORT SPEED:

m/s: 0,20 - 1,00

### STRAP TENSION:

Adjustable with 10 steps  
 Automatic strap tensioning  
 Tension at bundle in N: max. 325

### STRAPPING MATERIAL:

Polypropylene DIN EN 13 394  
 Width in mm: 5 - 12  
 Thickness in mm: 0,4 - 0,65

### SEALING METHOD:

Heat seal. Tensile strength of welded joint is approx. 80% of the breaking strength of the strap

### STRAP COIL:

Core ID in mm: 200  
 Core OD in mm: 420  
 Width in mm: 190 (160,180,200)

### POWER SUPPLY:

Wide Range Input 380-520V, 3AC; 47 63 Hz  
 Maximum fusing 16A (B-character)  
 Protection Type: IP 54

### POWER CONSUMPTION:

Power consumption in kW approx.: 0,30

### OPERATING CONDITIONS:

Temperature range in °C [°F]: +5 [41] - +45 [113]



**Signode Packaging Systems GmbH**

Markgrafenstraße 2 | D-95497 Goldkronach | Germany  
 Tel.: +49 (0) 9273 / 982-201 | Fax.: +49 (0) 9273 / 982-100  
 www.smb.biz | sales@smb.biz

